

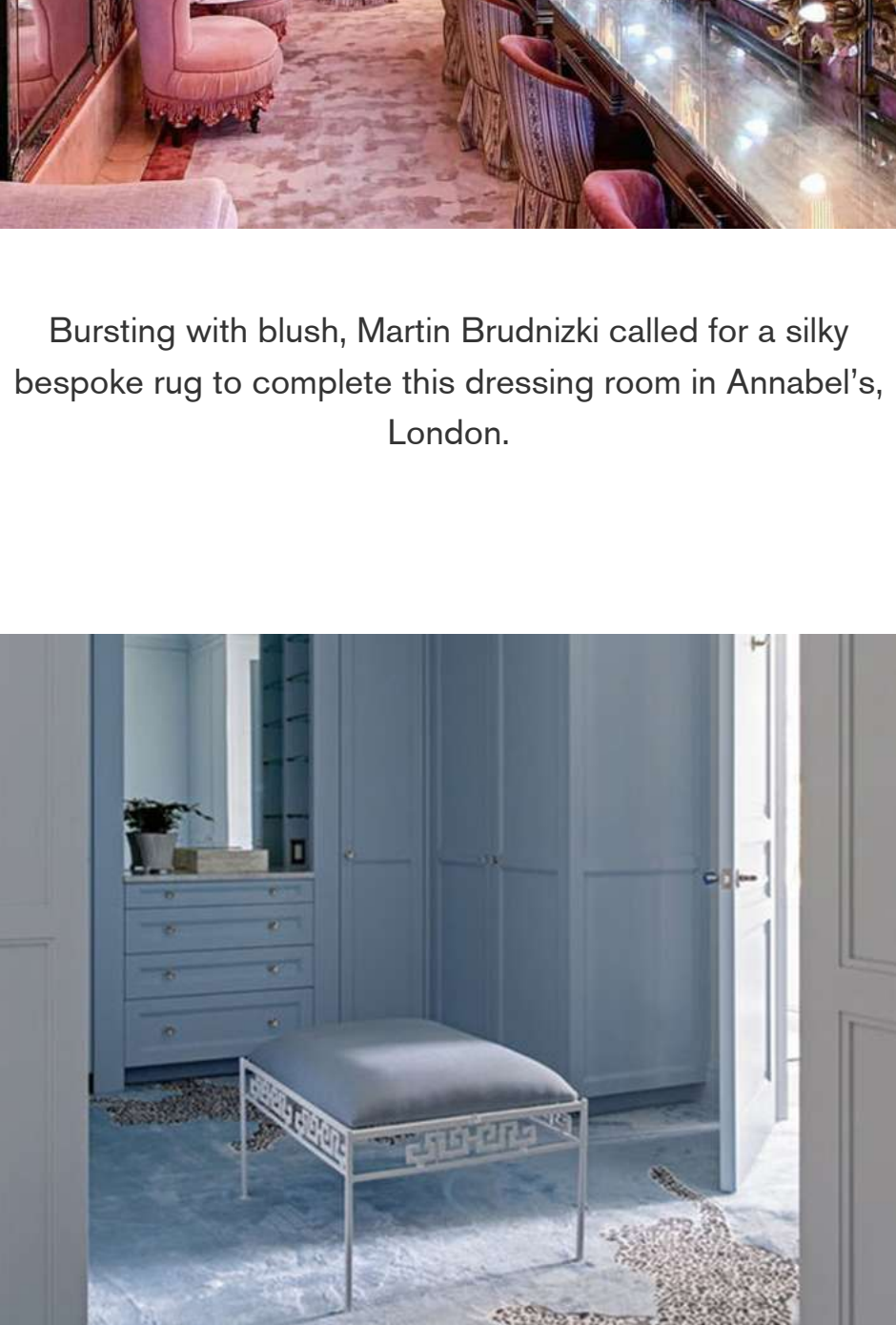
OUR EDIT

Wonderous Walk-In Wardrobes

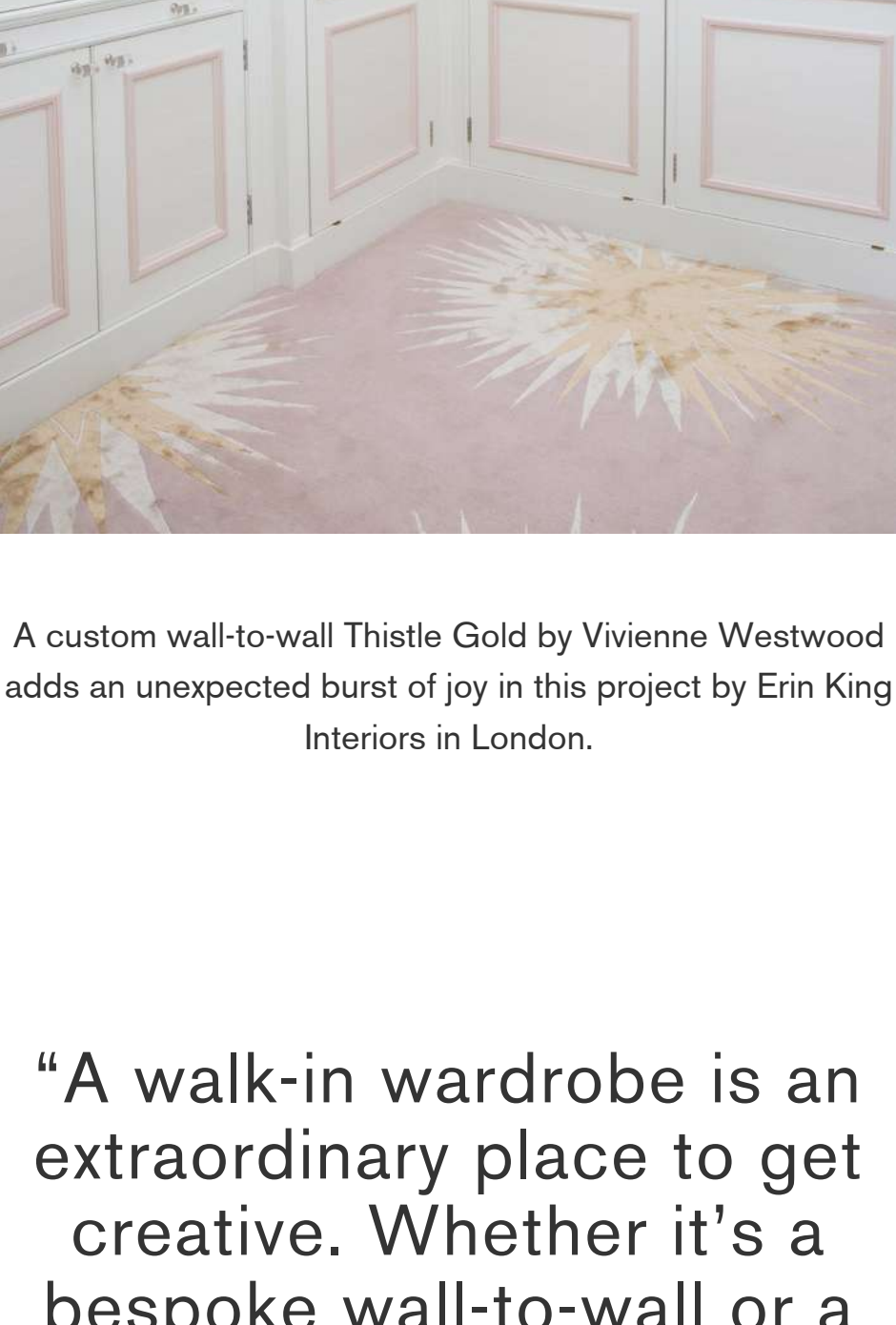
As a habitat for hats and handbags, a wardrobe is undressed without the perfect rug. We've rounded up 15 of our favourite installations from around the world to inspire your next project.



Portobello Pink adds a glamorous touch to this dressing room by Marcia Tucker in New York.



South Ridge Pink by Martyn Lawrence Bullard embraces the soothing palette of this closet created by EW Interior Design in Germany.



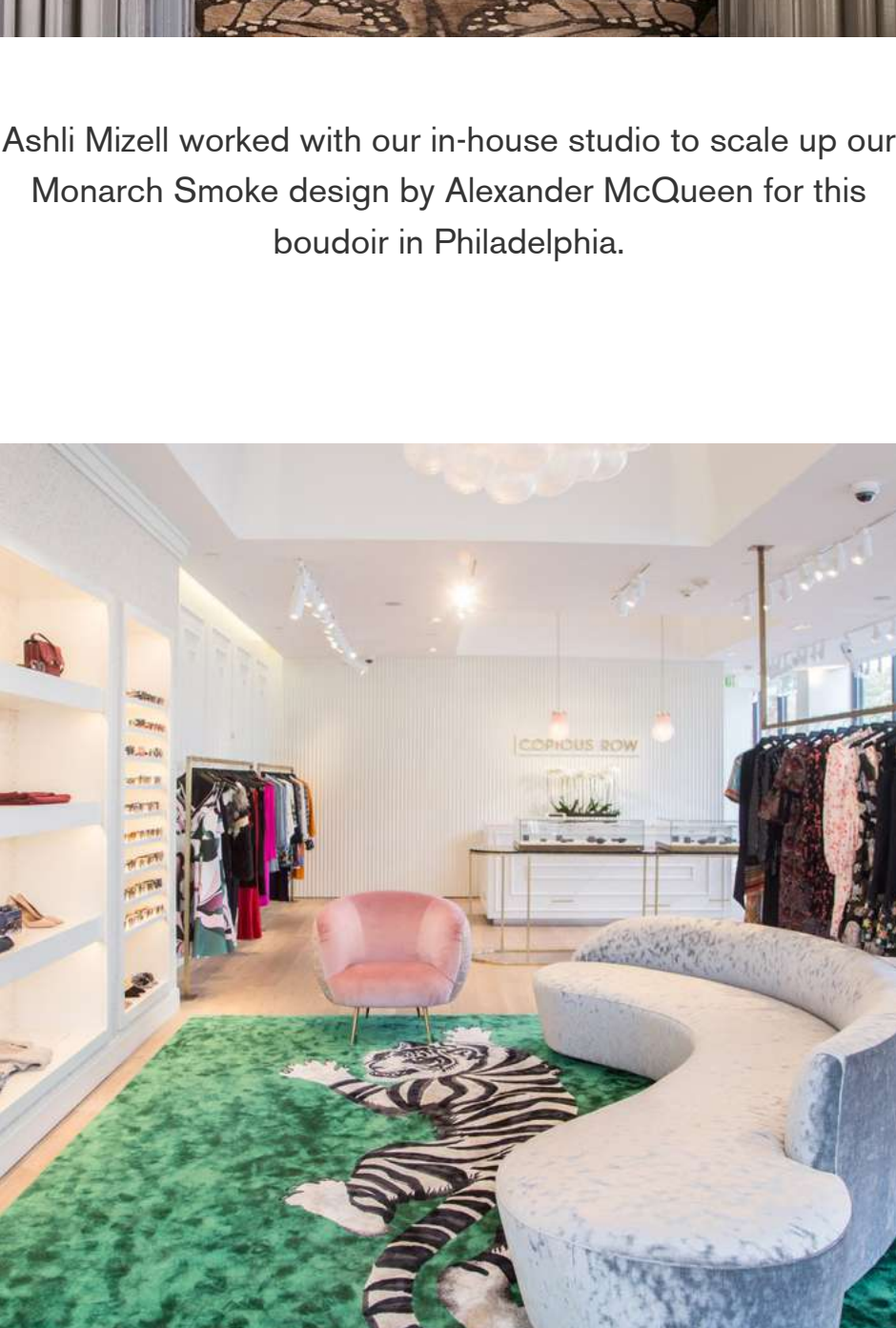
Monarch Fire by Alexander McQueen shines and shimmers in this wardrobe by Progressive Design Firm in Mexico City.



Bursting with blush, Martin Brudnizki called for a silky bespoke rug to complete this dressing room in Annabel's, London.



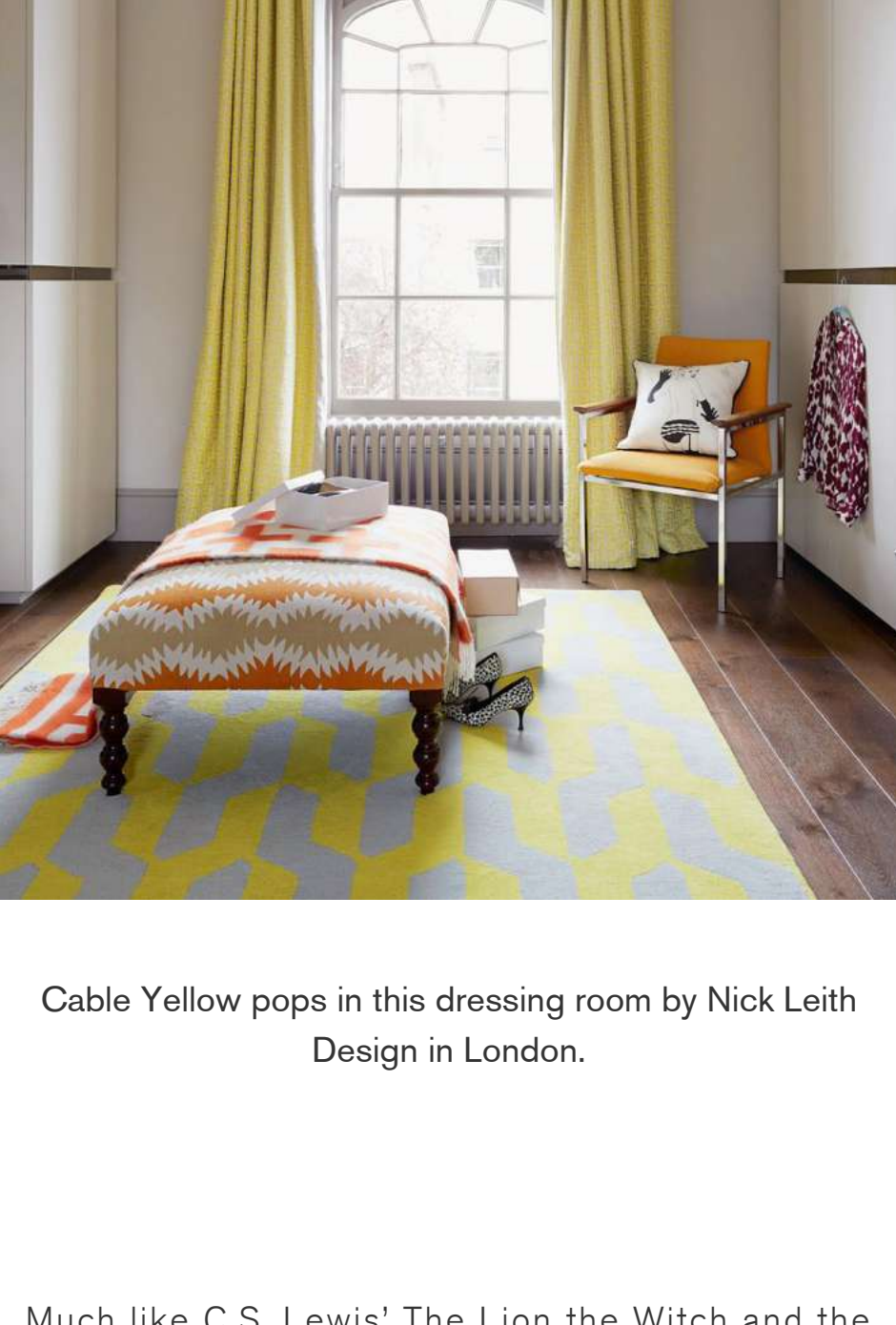
Climbing Leopard by DVF is customised in icy blue silk for this closet by Emily Tucker Design in Colorado.



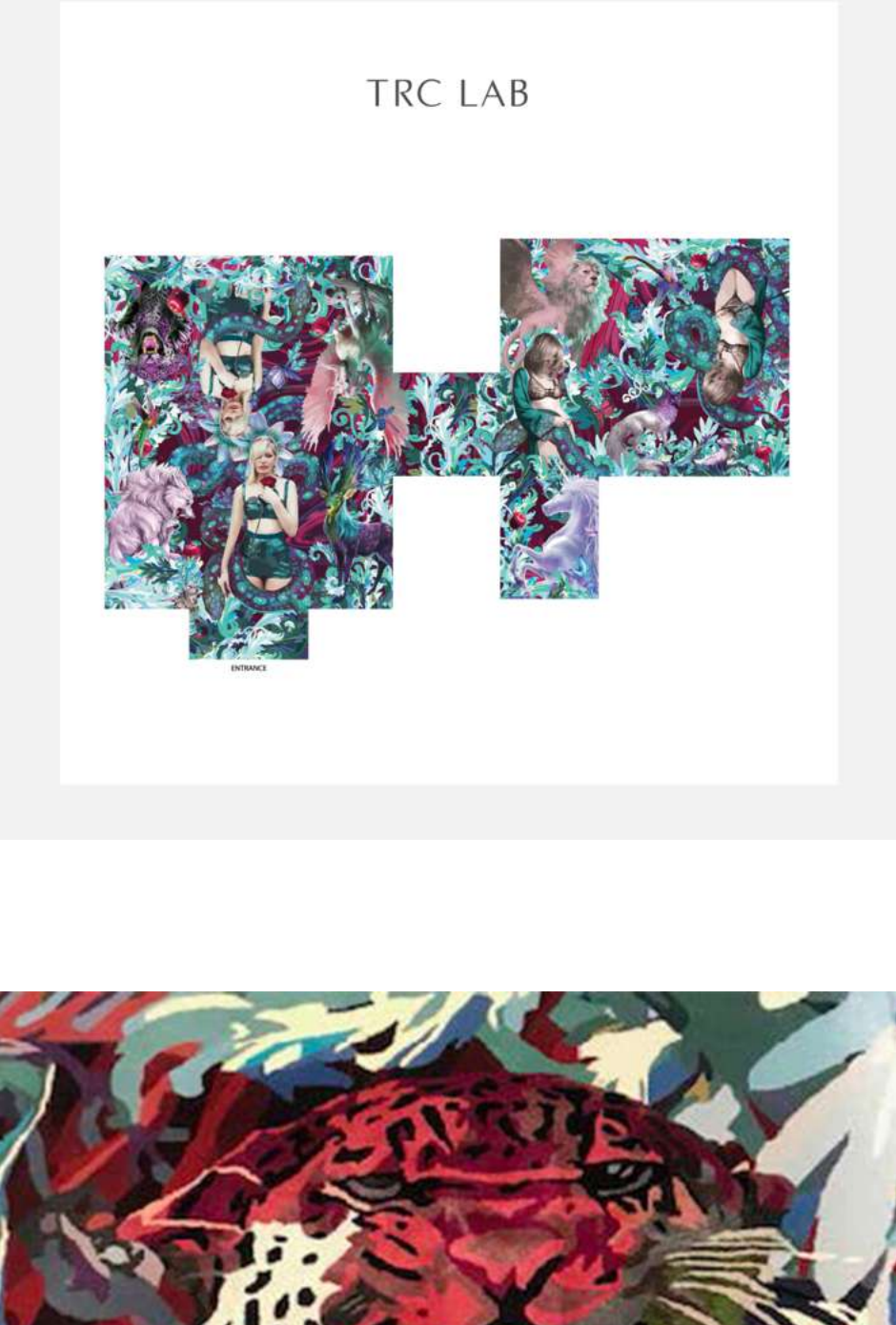
A custom wall-to-wall Thistle Gold by Vivienne Westwood adds an unexpected burst of joy in this project by Erin King Interiors in London.

“A walk-in wardrobe is an extraordinary place to get creative. Whether it's a bespoke wall-to-wall or a deep pile area rug, a soft texture underfoot is a delightful way to start the morning and a cosy finish to the end of the day.”

Steven Forrey, The Rug Company New York Area Director, based out of our brand-new flagship showroom at the New York Design Center, 200 Lexington



Our Empire runner by Tim Gosling adds a dash of elegance to this walk-in by Barlow & Barlow in England.



Our Alpaca rug creates a cosy start to the morning for Andrea Goldman Design's project in Chicago.



Monarch Smoke by Alexander McQueen creates a grand entrance for this walk-in by Karen Bow Interiors in New York.



Ashli Mizell worked with our in-house studio to scale up our Monarch Smoke design by Alexander McQueen for this boudoir in Philadelphia.



A custom snow tiger was created by our in-house studio for Copious Row in Massachusetts.



Framis by Mary Katrantzou perfectly pops in this dazzling dressing room by Barlow & Barlow in England.



An illustrative project by Gramercy Design showcases a custom Star Silk by Helen Amy Murray for their proposed New York-based installation.



Cable Yellow pops in this dressing room by Nick Leith Design in London.

Much like C.S. Lewis' The Lion the Witch and the Wardrobe, when you step through the doors of this walk-in closet by STA Architectural Group you're instantly transported into a whimsical and fantastical world.

From technical floor plan to artwork creation, our in-house studio worked side by side STA to bring the client's vision to life using our TRC LAB Handtufted product permitting an intricate level of detail.

